

# UNDERSTANDING THE KEY COMPONENTS OF THE PROPOSED MUNICIPAL WASTE DISPOSAL FACILITY

Do you know how the new municipal waste disposal facility will manage waste and recover resources?

**ANSWER: BY INSPECTING, SCREENING AND SORTING WASTE**

Trucks entering the facility are weighed and diverted to the Material Recovery Facility to sort wastes by material type:



**Weigh House and Weigh Scale**

**Accepted Waste**

- Organics
- Plastics
- Paper
- Glass
- Textiles/Clothes
- Household Garbage
- Corrugated Cardboard
- Metals
- Beverage Containers

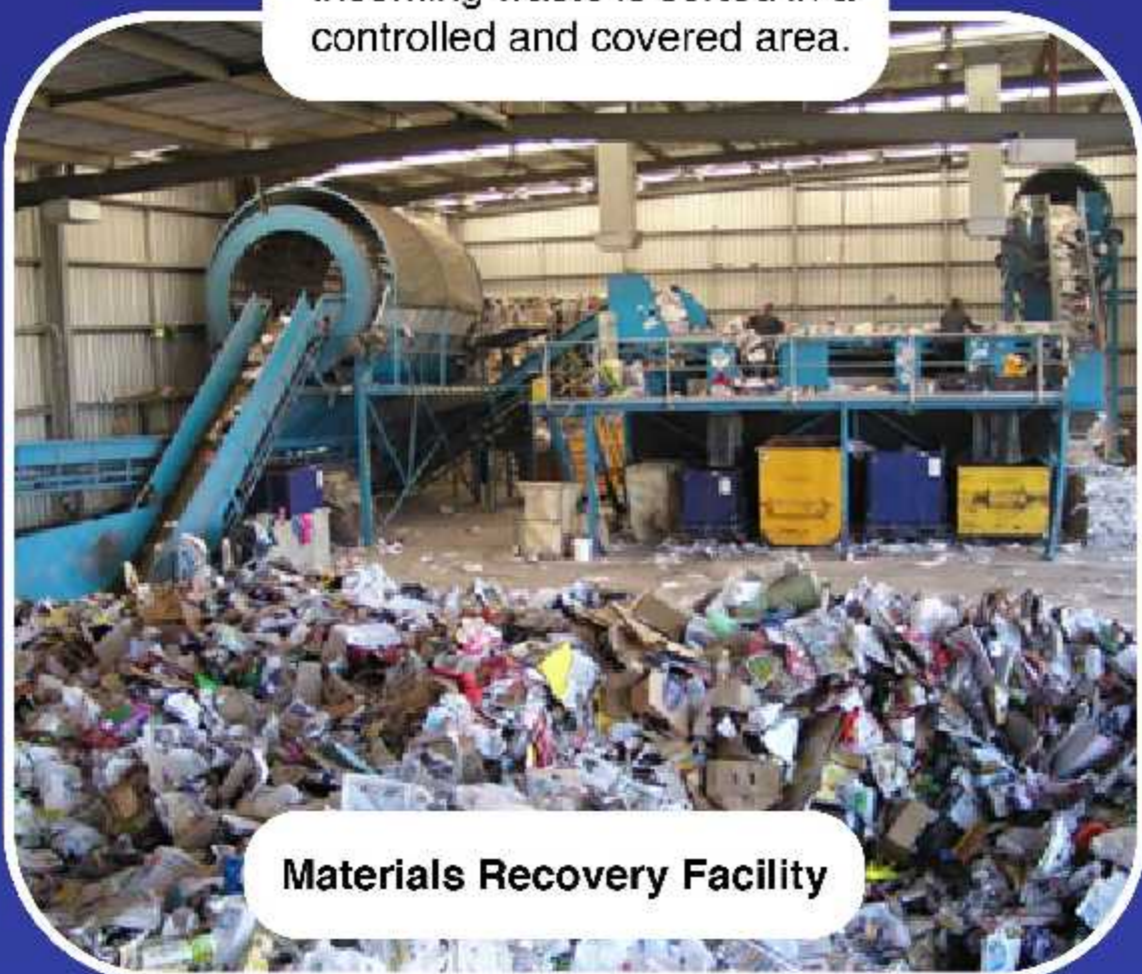
**For Composting**

- Vegetative material and yard waste



**Composting Facility**

Incoming waste is sorted in a controlled and covered area.



**Materials Recovery Facility**

Recovered material is sent to be recycled or marketed.

**Recyclable Resources**

- Plastics
- Glass
- Corrugated Cardboard
- Metals
- Beverage Containers

**Waste to be Landfilled**

- Biowaste
- Paper
- Textiles
- Sanitary Textiles

**Wastes not accepted at Landfill site:**

- Hazardous waste
- Liquid waste
- Petroleum contaminated soils
- Vehicle batteries

**ENGINEERED SANITARY LANDFILL**

